

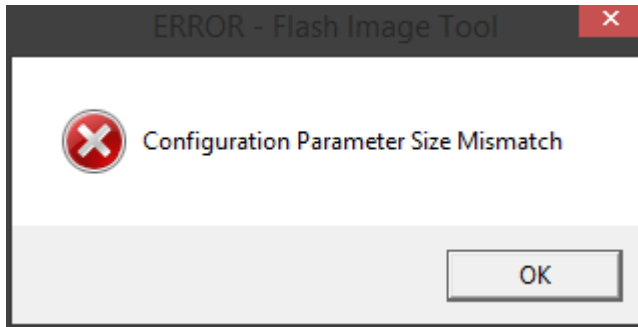
WARNING:

First try **FITC v7.1.60.1191**. Check that you can import and build your image,

WITHOUT ANY ERRORS!

If you see this or any other error message while importing or building an image,

DO NOT CONTINUE!



Try **FITC v7.1.13.1088** instead. Check that you can import and build your image,

WITHOUT ANY ERRORS!

If the errors persist and you are loading a proper ME7-only image,

DO NOT CONTINUE!

&

LET ME KNOW!

NOTE:

These **FITC v7** tools are **ONLY** for systems with **ME7** firmware images.

For upgraded Cougar Point (6-series) or Patsburg (X79/C600) systems with **ME8**, use

ONLY FITC v8 releases!